



Being HIDE Alert

Solomon Lorthu
Motorola Solutions

14 October 2021



HIDE

WHAT

- HIDE - Hotspot Identification for Dynamic Engagement
- An early warning system to facilitate pre-emptive interventions at potential hotspots
- HIDE uses COVID-19 test data with Machine Learning algorithm to flag potential hotspots



HIDE

HOW

- Covid +ve check-ins at premises
 - Confirmed +ve and enters
 - Enters whilst waiting for test result, and result that comes later is +ve by EOD
 - Enters, then takes a test, and result that comes later is +ve by EOD
- Contact Tracing + Big Data Analytics + AI System
 - Predicts specific premises that are at risk of becoming hotspots over the next 7 days
- Contacts Identified
 - Possible exposure based on My-Sejahtera check-ins
- Flag Potential Hotspots
 - Large hotspots ≥ 50 transmissions
 - Small hotspots < 50 transmissions



HIDE

WHEN FLAGGED - An Example based on a Real Case

- Day 1 - 1st Warning (#X High Risk Individual Check-in; #A contacts exposure)
- Day 3 - 2nd Warning (#X High Risk Individual Check-in; #B contacts exposure)
- Day 7 - Final Listing and notification of closure (#X High Risk Individual Check-in; #C contacts exposure)
 - **Operations closed for 3 days**



Being HIDE Alert @ Motorola Solutions

Enhance Employee Self Declaration

- Required to refresh MySejahtera status daily
- Required to Check-Out in MySejahtera daily when leaving the premises
- Immediately update HR if any change to MySejahtera Status - other than Blue (Low Risk) or Yellow (Casual Contact - No Symptom)
- Employees and contractors who are contact traced will be required to undergo RT-PCR test - will be refused subsequent entry unless test result is -ve

Note: Motorola Solutions conducts employee self-tests every 2 weeks.

FORWARD
STRONGER TOGETHER



ALLOWED ENTRY

Keputusan Penilaian Kesihatan

Risiko Rendah

Risiko anda dijangkiti COVID-19 adalah rendah pada masa ini.
Your risk for COVID-19 is minimal at this moment.

Keputusan Penilaian Kesihatan

Kontak Kasual

Anda telah dikenalpasti sebagai Kontak Kasual.
You have been identified as a Casual Contact.

NOT ALLOWED ENTRY

Ministry of Health (Malaysia)

Home Surveillance Order
Under Section 15(1) Prevention and Control of Infectious Disease Act 1988 (Act 342)

Keputusan Penilaian Kesihatan

Kontak Rapat

Anda dikenal pasti sebagai kontak rapat kepada pesakit COVID-19 dan mempunyai simptom berkaitan dengan COVID-19.
You have been identified as a close contact to a positive COVID-19 patient.

Status Risiko COVID-19
COVID-19 Risk Status

Individu Dalam Pemantauan / Person Under Surveillance (PUS)

Keputusan Penilaian Kesihatan

Patient Under Investigation (PUI)

Anda menunjukkan simptom dan mempunyai faktor risiko dijangkiti COVID-19.



Being HIDE Alert @ Motorola Solutions

HIDE Warning Readiness & Approach

- 1st Warning - Activate reactive & pre-emptive measures
 - Enhance Access Control (Entry & Exit)
 - Increase Test Coverage
- 2nd Warning - Activate tighter measures
 - Increase Test Frequency
 - Implement Capacity Control
 - Meeting Rooms Closed
 - Only In-dining

FORWARD
STRONGER TOGETHER



Being HIDE Alert @ Motorola Solutions

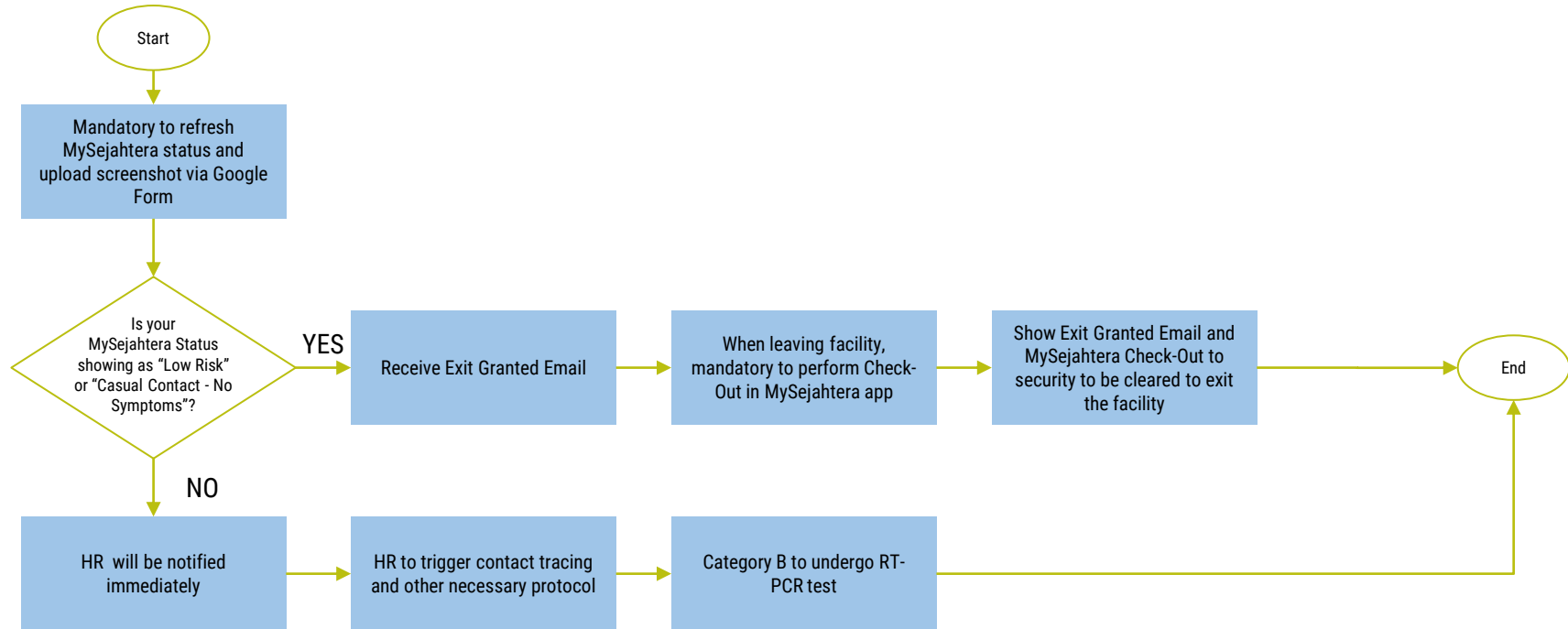
FIRST WARNING RECEIVED - DAY 1 (Enhance Access Control)

- “Soft Lockdown” triggered with Risk Treatment for the following groups of employees and contractors
 - **Group1:** Employees and contractors currently inside the facility
 - Refer to First Warning - Group1 Flow
 - **Group2:** Employees and contractors who came into the facility but may have left prior to first warning received
 - Refer to First Warning - Group2 Flow
 - **Group3:** Employees and contractors who plan to come into the facility on the same day after a first warning was received
 - Refer to First Warning - Group3 Flow



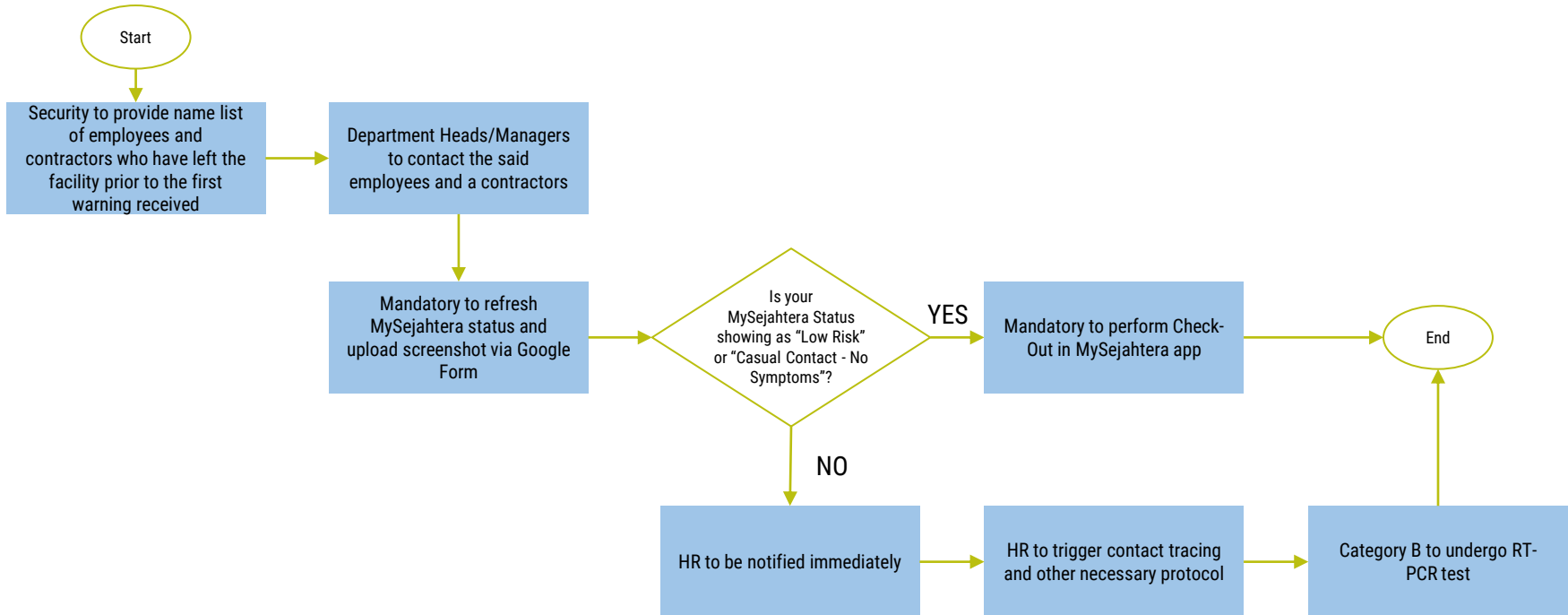
Being HIDE Alert @ Motorola Solutions

DAY 1 (Enhance Exit Control) - GROUP1 FLOW (Employees Inside Facility)



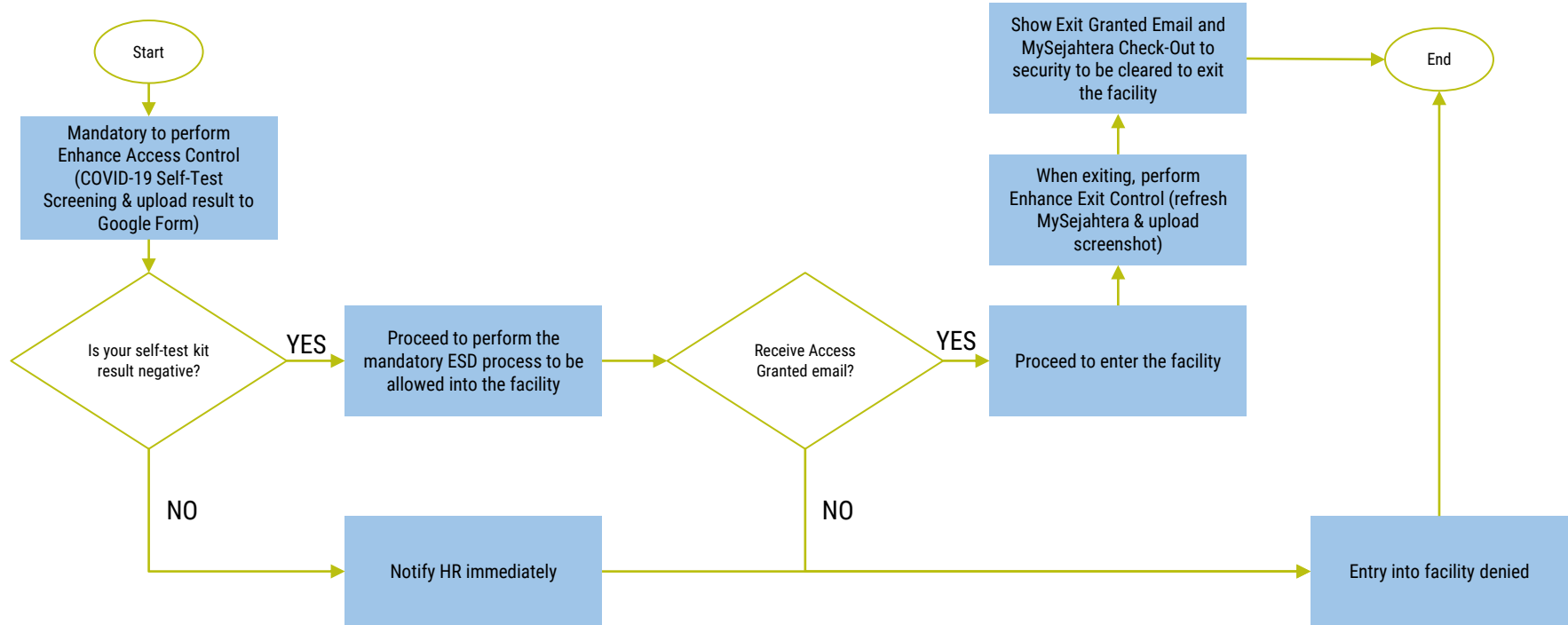
Being HIDE Alert @ Motorola Solutions

DAY 1 (Enhance Exit Control) - GROUP2 FLOW (Employees Exited Facility Prior Warning)



Being HIDE Alert @ Motorola Solutions

DAY 1 (Enhance Access & Exit Control) - GROUP3 FLOW (Employees Entering Facility Post Warning)



Being HIDE Alert @ Motorola Solutions

FIRST WARNING RECEIVED - DAY 2 TO DAY 7 (Increase Test Coverage)

- All employees and contractors must perform a COVID-19 self-test kit screening on DAY 2 and upload their result via Google Form. Only negative self-test result will be allowed entry.
 - For those who do not have a backup self-test kit, refer to self-test kit collection guide
 - Collect a new self-test kit as the new “spare”. Refer to self-test kit collection guide
- If no further warning received till Day 7, normal access and exit control will resume on Day 8.



Being HIDE Alert @ Motorola Solutions

SECOND WARNING RECEIVED (Implement Capacity Control & Increase Test Frequency)

- Only business critical employees and contractors will be allowed into the facility.
- Employees and contractors that are returning to the facility must perform a DAILY COVID-19 self-test kit screening prior to coming into the facility
- All meeting rooms will be closed - no face-to-face meetings allowed.
- Only in-dining allowed
- If no further warning received till Day 7, normal access and exit control will resume on Day 8.

FORWARD
STRONGER TOGETHER





THANK YOU

Motorola Solutions, Inc. 500 West Monroe Street, Chicago, IL 60661 U.S.A. motorolasolutions.com

MOTOROLA, MOTO, MOTOROLA SOLUTIONS and the Stylized M Logo are trademarks or registered trademarks of Motorola Trademark Holdings, LLC and are used under license. All other trademarks are the property of their respective owners. © 2020 Motorola Solutions, Inc. All rights reserved.



MOTOROLA SOLUTIONS